



HOTEL EVROPA

since 1873



FACTS & INFORMATION

Since 1873 Evropa has been a landmark in the old town of Celje.

LOCATION


Located in the old town of Celje, which is a good starting point for excursions and historic cultural attractions, concerts, theatre and exhibitions. There are several banks, a post office, shopping centers, sports and recreation areas in the vicinity of the hotel.

EUROTAS DESTINATIONS

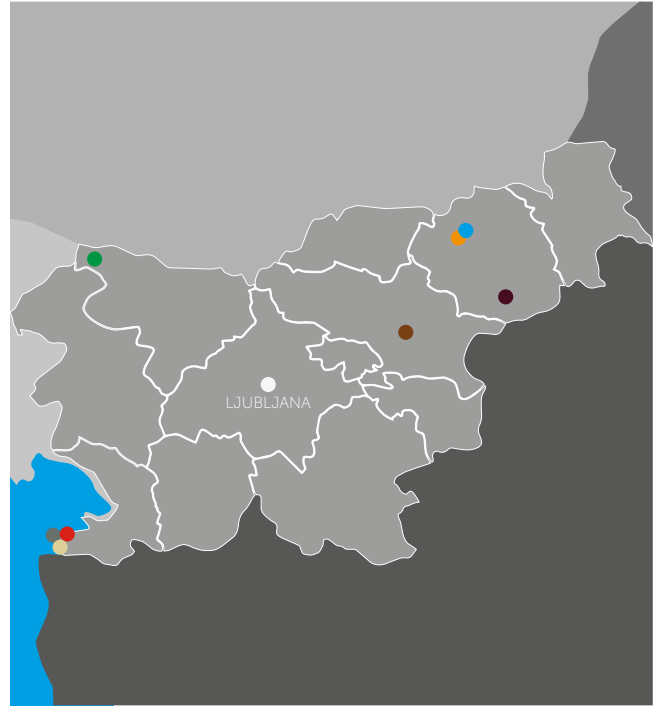
- Boutique Hotel Portorose **** superior
- Barbara Piran Beach Hotel *** superior
- Hotel Piran ****
- Hotel Evropa ****
- Hotel Arena Maribor **** superior
- Hotel Piramida Maribor ****
- Hotel Ptuj *** superior
- Hotel Kranjska Gora ****

PUBLIC TRANSPORT

 70 m
Railway station Celje

 300 m
Bus station Celje

 0 m
Hotel parking



CLOSEST AIRPORTS

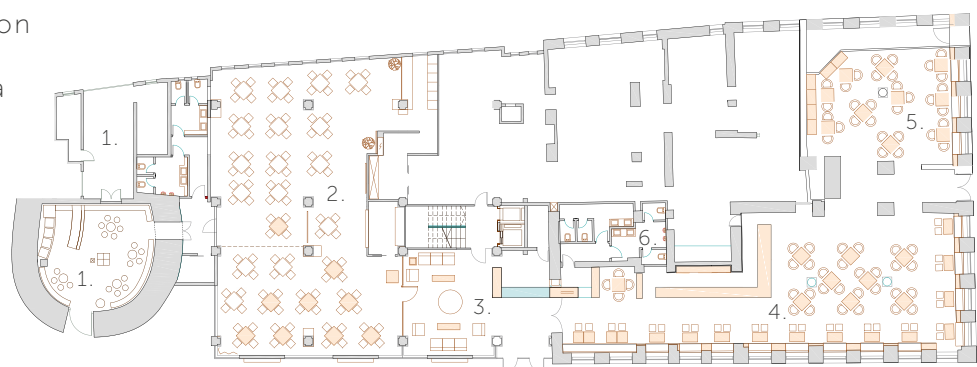
- Airport Trieste - 196 km
- Airport Jože Pučnik Ljubljana - 90 km
- Airport Zagreb - 120 km
- Airport Graz - 110 km

CLOSEST CITIES

- Trieste - 175 km
- Ljubljana - 76 km
- Vienna - 311 km
- Zagreb - 113 km

HOTEL PLAN GROUND FLOOR

1. Medieval Tower
2. Restaurant
3. Lobby and Reception
4. Café
5. Brunch Dining Area
6. Restroom



ROOMS

31 STANDARD ROOM DOUBLE BED

- BATHROOM
- HAIRDRYER
- CABLE TV
- TELEPHONE
- MINI BAR
- SAFE
- DESK
- WARDROBE
- A/C
- SLIPPERS

BED SIZE
160 x 200 cm

ROOM SIZE
14 m²



15 ATTIC TWIN ROOM

- BATHROOM
- HAIRDRYER
- CABLE TV
- TELEPHONE
- MINI BAR
- SAFE
- DESK
- WARDROBE
- A/C
- SLIPPERS

BED SIZE
2 x 90 x 200 cm

ROOM SIZE
16 m²



4 SUPERIOR ROOM SINGLE BED

- BATHROOM
- HAIRDRYER
- CABLE TV
- TELEPHONE
- MINI BAR
- SAFE
- DESK
- WARDROBE
- A/C
- SLIPPERS

BED SIZE
90 x 200 cm

ROOM SIZE
14 m²



11 SUPERIOR ROOM DOUBLE BED

- BATHROOM
- HAIRDRYER
- CABLE TV
- TELEPHONE
- MINI BAR
- SAFE
- DESK
- WARDROBE
- A/C
- SLIPPERS

BED SIZE
180 x 200 cm

ROOM SIZE
32 m²



5 DOUBLE ROOM FRENCH BED

- BATHROOM
- HAIRDRYER
- CABLE TV
- TELEPHONE
- MINI BAR
- SAFE
- DESK
- WARDROBE
- A/C
- SLIPPERS

BED SIZE
140 x 200 cm

ROOM SIZE
14 m²



5 ATTIC DOUBLE ROOM

- BATHROOM
- HAIRDRYER
- CABLE TV
- TELEPHONE
- MINI BAR
- SAFE
- DESK
- WARDROBE
- A/C
- SLIPPERS

BED SIZE
160 x 200 cm

ROOM SIZE
16 m²



1 FAMILY ROOM

- BATHROOM
- HAIRDRYER
- CABLE TV
- TELEPHONE
- MINI BAR
- SAFE
- DESK
- WARDROBE
- A/C
- SLIPPERS

BED SIZE
2 x 90 x 200 cm
1 x 180 x 200 cm

ROOM SIZE
30 m²



5 COMFORT DOUBLE ROOM

- BATHROOM
- HAIRDRYER
- CABLE TV
- TELEPHONE
- MINI BAR
- SAFE
- DESK
- WARDROBE
- A/C
- SLIPPERS

BED SIZE
160 x 200 cm

ROOM SIZE
20 m²



Enjoy a cup of coffee and delicious delicacies in good company.

CAFÉ AND PATISSERIE EVROPA

The perfect sport to pamper yourself with our sweet delicacies and enjoy a good cup of coffee.

For your good mood we also take care of the regular organization of café evenings, where we provide you with pleasant music rhythms and allow you to relax with delicious drinks from our bar.



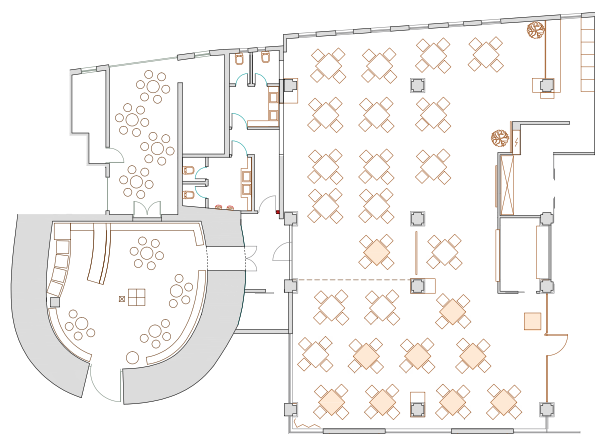
MON - SAT | 14:00 - 22:00
SUN | 14:00 - 21:00

Info & Reservations: +386 3 426 90 00.

HOTEL EVROPA'S RESTAURANT AND MEDIEVAL TOWER

Once a part of the medieval town wall intended for the defense from unwanted visitors, the tower is today used for official events, private evening parties, various gatherings, family celebrations, private dinners, business lunches, civil wedding ceremonies, etc. We are very proud that we were able to combine the traditional with the modern world, which is clearly reflected in the interior design of the tower.

À la carte dining in Medieval Tower? Yes, please! Join us in intimate ambience with historical touch and enjoy the culinary journey. Our sommelier will happily guide you through our wide selection of local and international wines, and help you pick the one which fits your taste and dishes.



PLACE	I (nr. of persons)	THEATER (nr. of persons)
Restaurant	120	/
Medieval Tower	40	60

BUSINESS & PRIVATE EVENTS

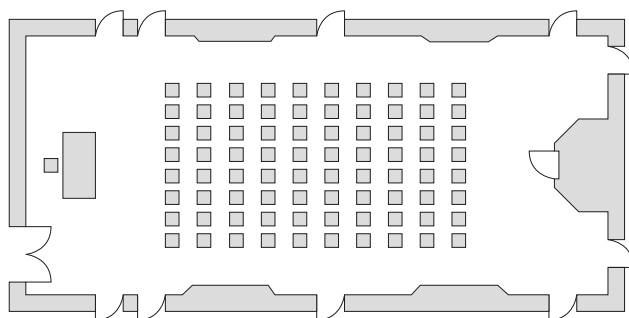
At Hotel Evropa, we provide complete catering service, which include all the equipment (including tent), decorations, service and also the final cleaning. The venues vary and there are no restrictions. You can choose from forest clearings, meadows, family gardens, factory production halls, galleries, museums, banquet halls, or a tent.

At each venue, we make absolutely sure that our service reflects the purpose and goals of the gathering as much as possible. We offer all types of catering: from serving various menus on platters (slow food, finger food, cold and warm buffet, menus for various occasions) to gala dinners with candlesticks. At your request we can vary our offer and prepare the dishes right in front of the guests.

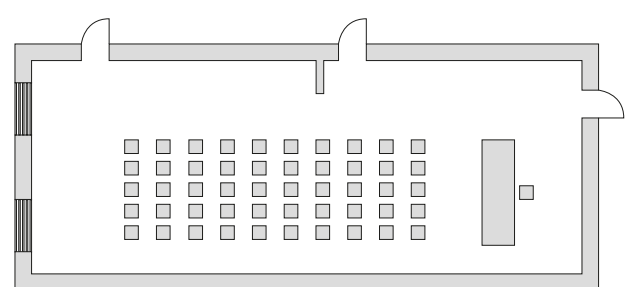


HALL	m ²	THEATER (nr. of persons)	U (nr. of persons)	I (nr. of persons)
Congress Hall	106	80	50	60
Crystal Saloon	80	50	30	40

The Congress Hall is located on the 4th floor.



The Crystal Saloon is located on the 1st floor.



Both venues come technically equipped for your needs and wishes.

They feature a PC, LCD projectors, projection screens, flip charts, modern sound systems, wireless internet connection, decks and platforms for speakers.

INTERESTING DESTINATIONS

Celje is one of the most historically rich towns in Slovenia. Explore the beautiful country destinations and tourist attractions by foot or maybe even with a bike or car.



**OLD CASTLE
CELJE**

The Old Castle of Celje. A magnificent castle with walls which for centuries reigns on a hill above the city, will for sure leave you speechless from far away. Once you visit it, it will stay in your memories forever.



**CELJE REGIONAL
MUSEUM**

The Celje Regional Museum, the second oldest museum in Slovenia, is situated in the old centre of the town. Its collections (from prehistoric times until World War I) are exhibited in the Old Counts' Mansion and the Princely Palace.



**ŠMARTINSKO
LAKE**

Šmartinsko lake is located in the direct vicinity of Celje. Because of its winding coastline and interesting surroundings, it is an appealing tourist destination.



**OLD COUNTY
CELJE**

During the renovation works, quality elements from the building's history were gradually revealed, such as wall paintings and genuine profiled wooden ceilings. With the new museum contents and the presentation of cultural-historical and ethnological objects from Celje and its surroundings, the Late Renaissance building was given a new life.



**CELEIA - A TOWN
BENEATH THE TOWN**

The Celeia archaeological exhibition – a town beneath today's town in the cellars of the Princely Palace is so far the largest presentation of the remains of Roman Celeia »in situ«. Its silent yet picturesque testimony invites you to walk among its ancient walls, which are the evidence of the town's rich history.



**CELJE
HUT**

A fan favorite destination for the town folk. A weekend hike to the top and a good mushroom soup is a must for every traveller that comes to Celje. The destination is popular in all seasons of the year. During the winter time it is a great sport to go skiing.

HOTEL EVROPA ****

hotel-evropa.si
evropa@eh.si | +386 3 426 90 00